

Code: Custom

Description:BS2F 2 MGPM 205

Pump data:

H max (m): 50.00

H min (m): 11.00

Q min (mc/h): 1.00

Q max (mc/h): 5.40

Impeller diameter (mm): 105.00

N. of impeller: 5

PF:0.80

Weight (kg): 13,62

Construction materials:

Pump Casing: Cast iron GJL 200 EN 1561

Casing Cover: Cr-Ni steel 1.4301 EN 10088 (AISI 304)

Stage Casing:: Noryl PPO-GF20

Impeller:: Noryl PPO-GF20

Shaft: Cr-Ni steel 1.4301 EN 10088 (AISI 304)

Mechanical Seal: Carbon-Ceramic-NBR

Motor data:

n (rpm): 2800

Pn (kW): 0.75

Pn (HP): 1.00

Motor type: IM

Motor phases: 1~

Un (V): 230

fn (Hz): 50

Motor poles: 2

In (A): 5.7

Insulation class: F

Service: S1

Efficiency Index (EI): IE2-77.4

Ingress protection: IP 54

BOOSTER SET CONSTRUCTION MATERIAL

Baseplate: Zinc-plated Steel S235JR

Anti-Vibration Feet:

Rubber NBR (nitrile butadienerubber)

Manifolds: Cr-Ni steel 1.4301 EN 10088 (AISI 304)

Nickel-plated Brass

Gaskets: Rubber NBR (nitrile butadiene rubber)

Pressure Gauge: Brass

Fittings: Brass

Shut-off Valves: Nickel-plated Brass

PTFE (Polytetrafluoroethylene)

Non-Return Valves:

Rubber NBR (nitrile butadienerubber)

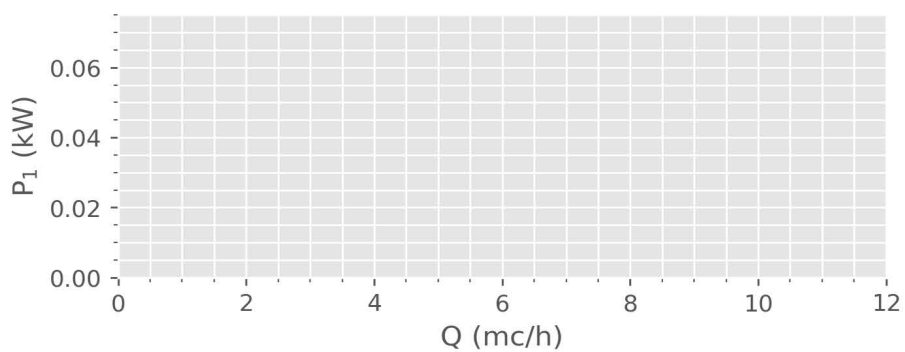
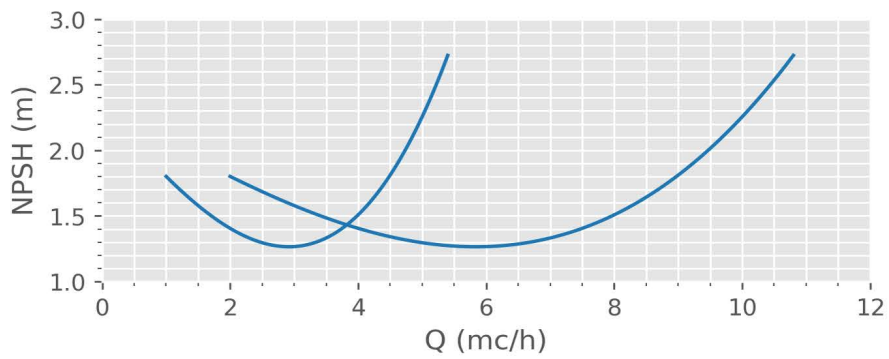
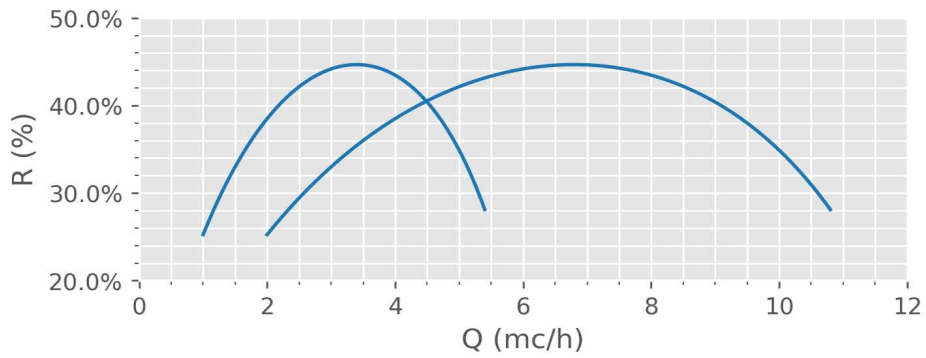
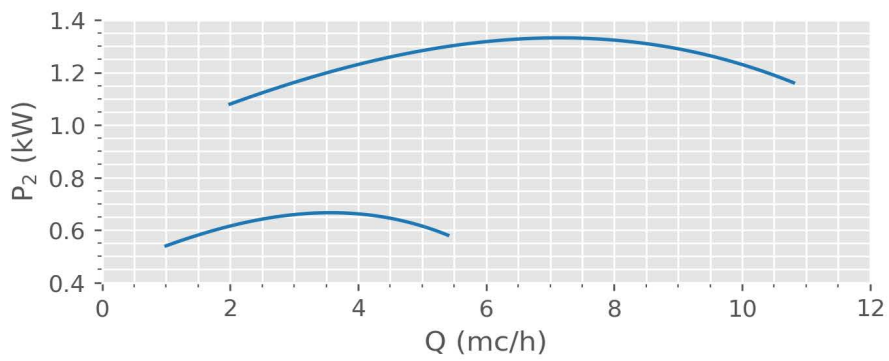
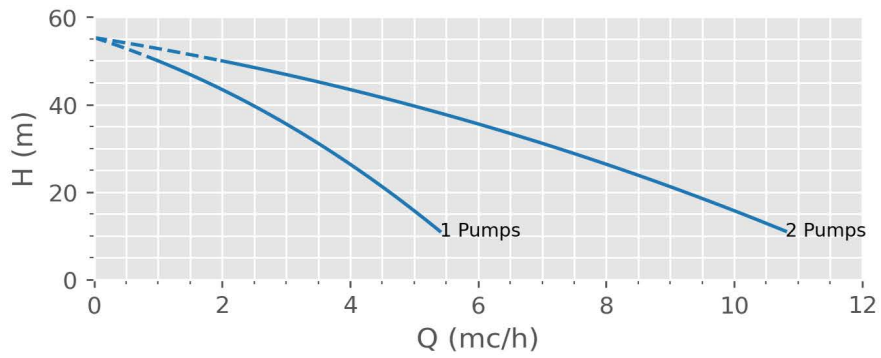
Nickel-plated Brass

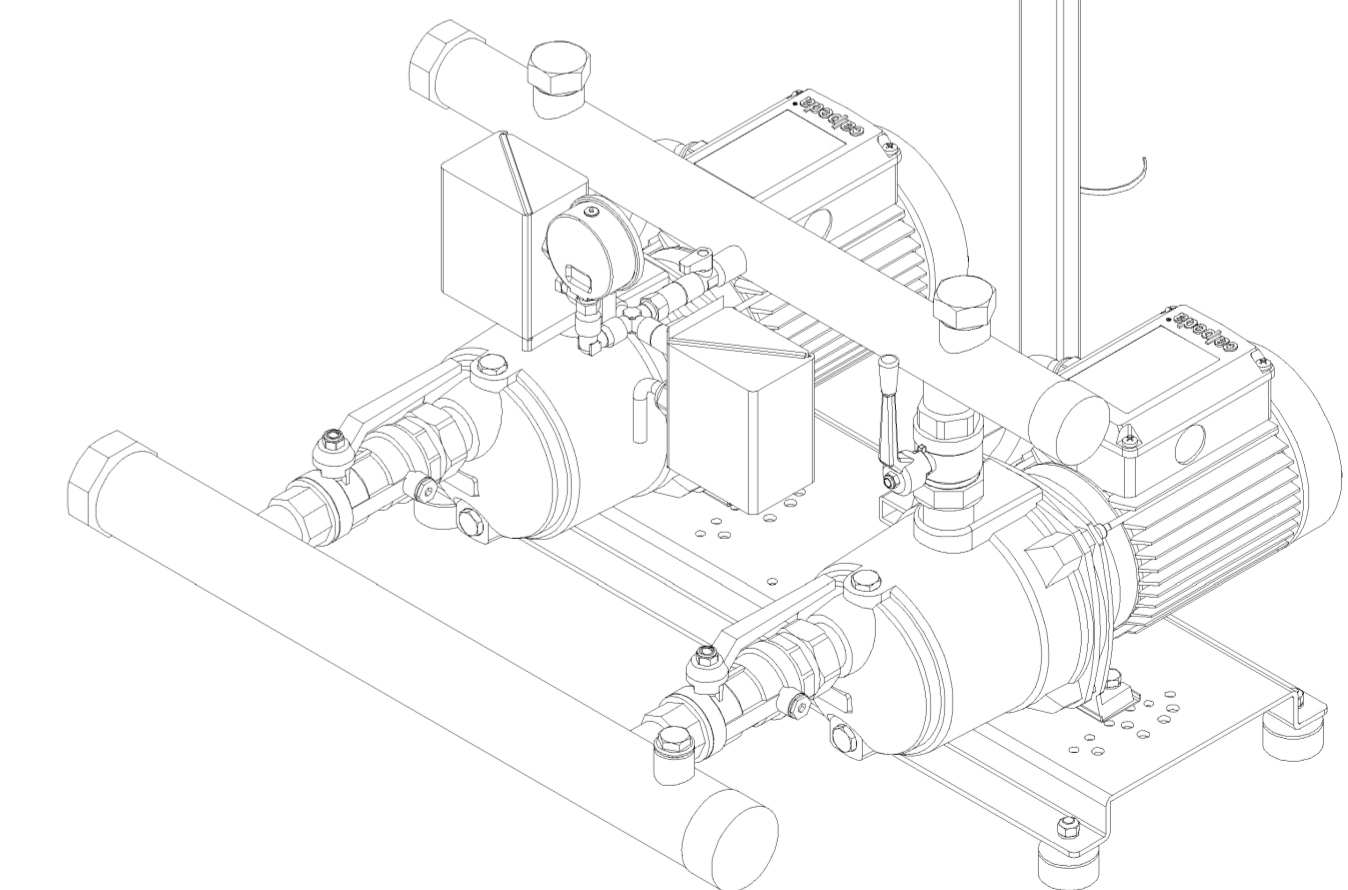
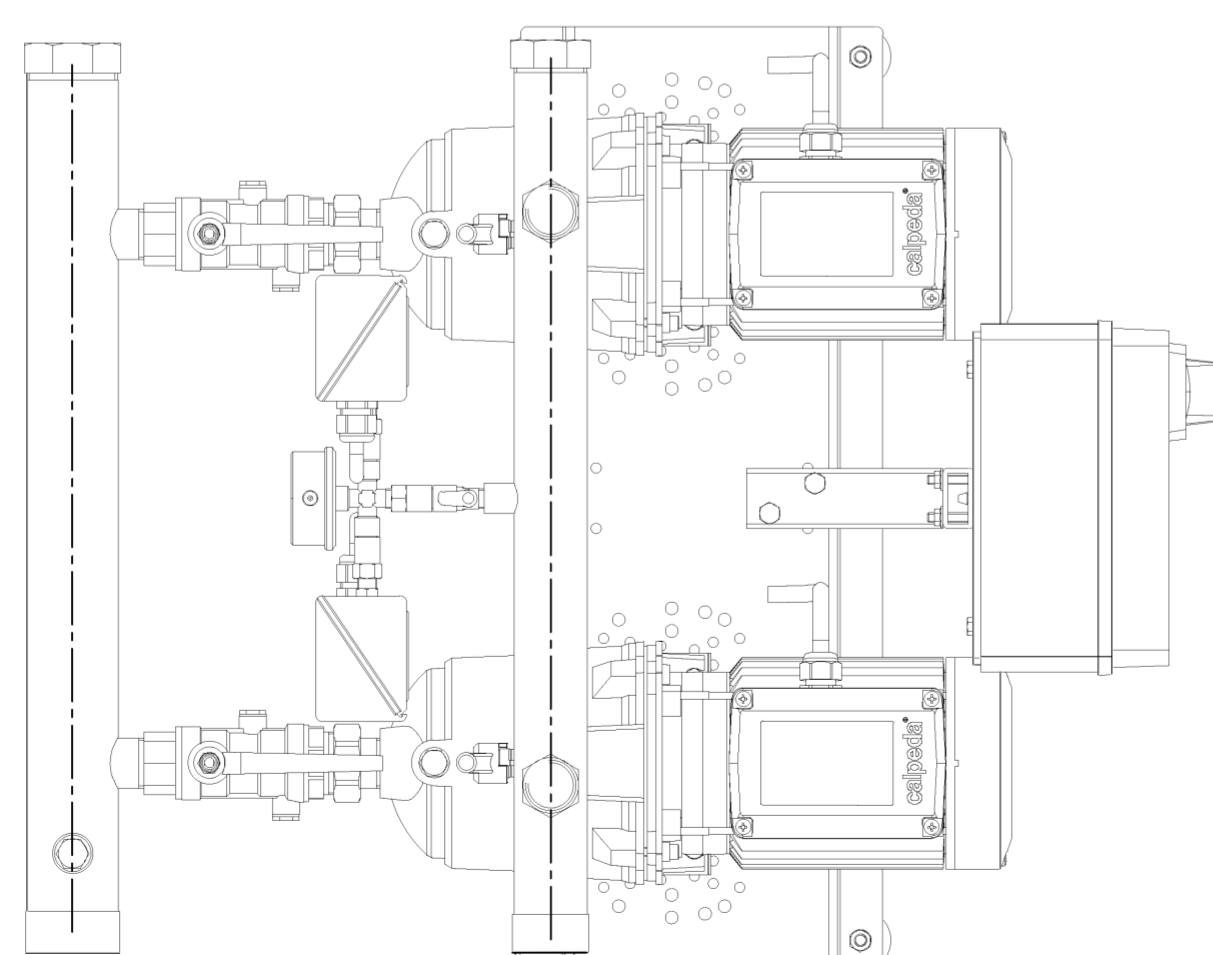
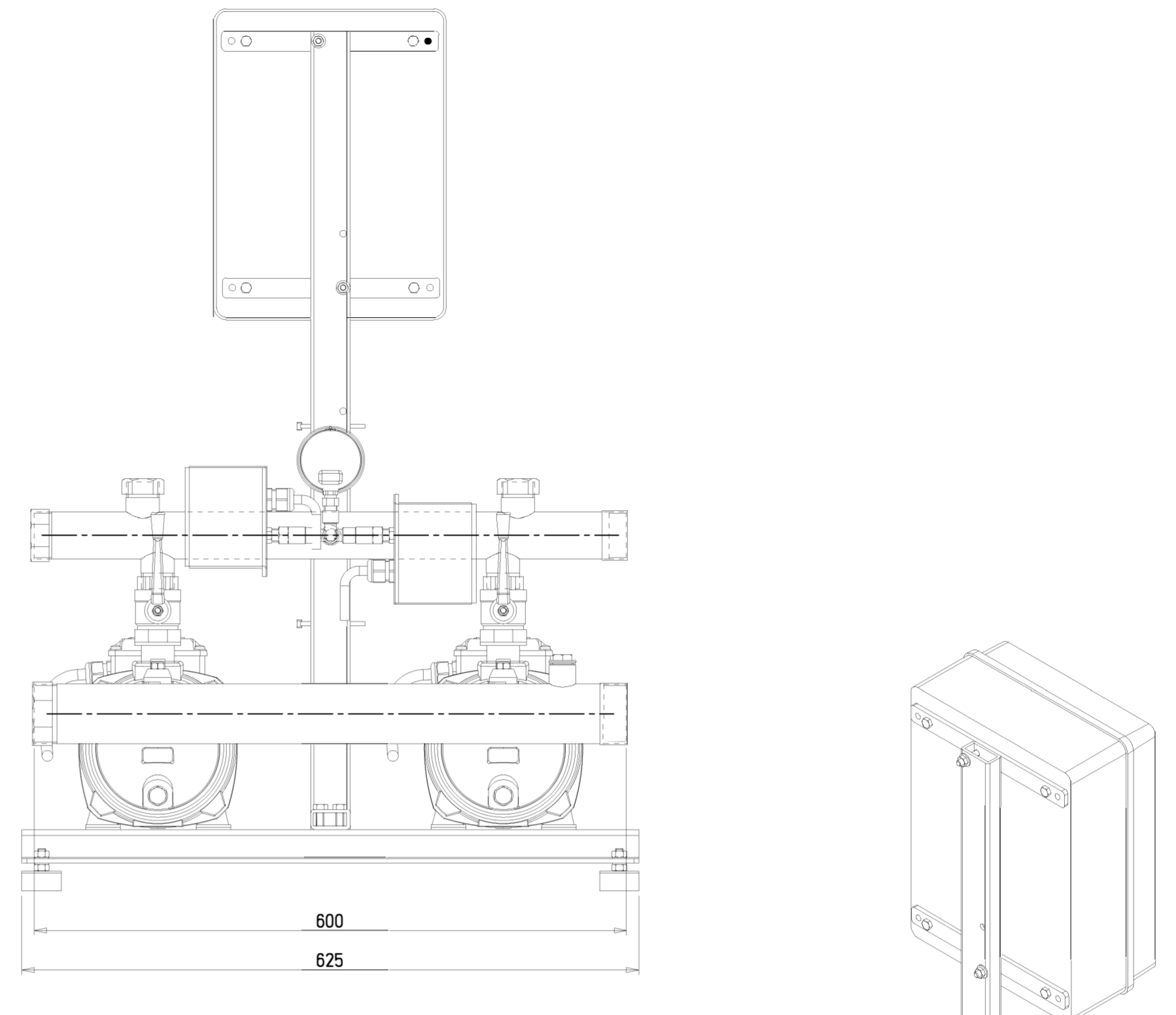
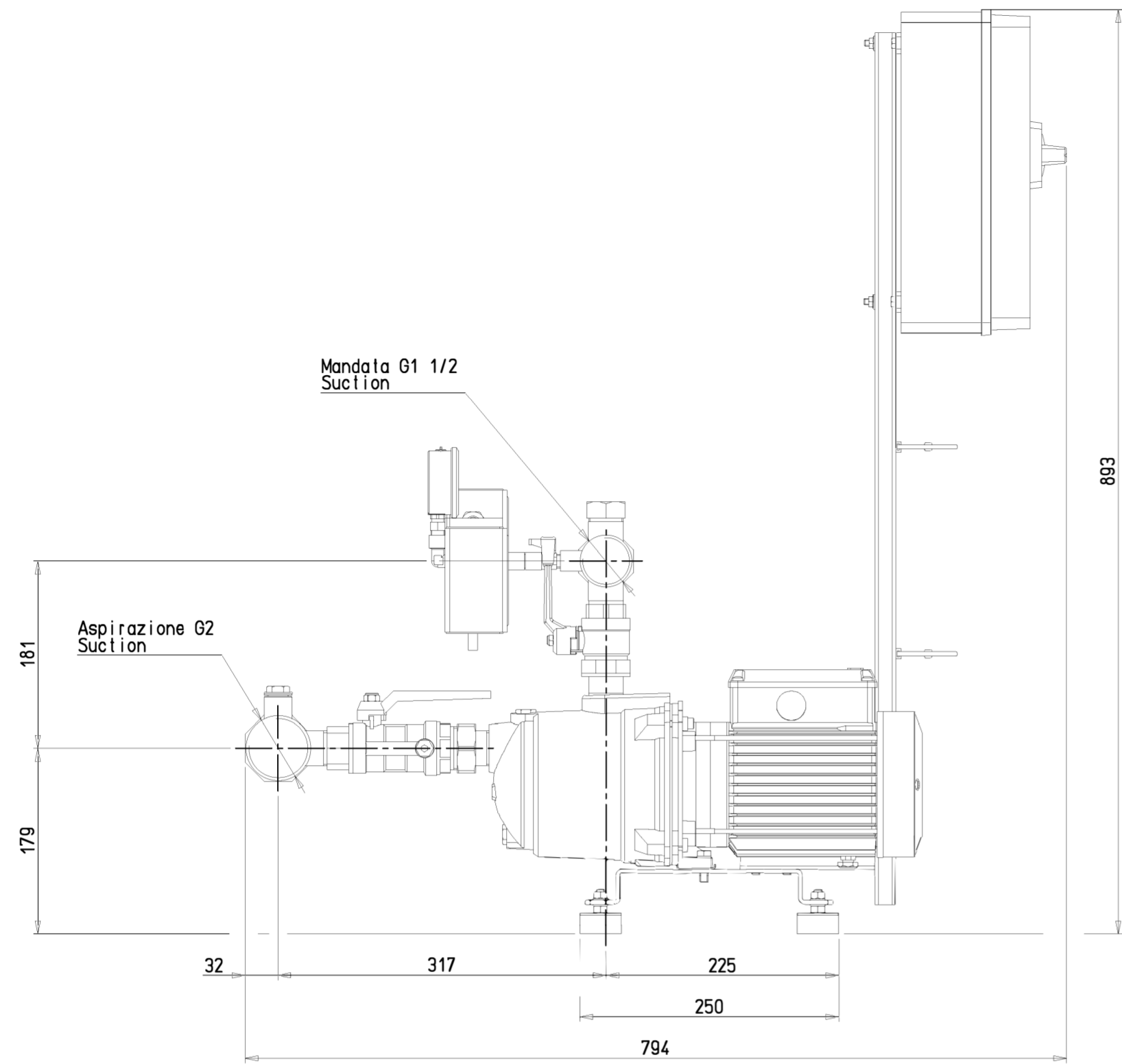
PTFE (Polytetrafluoroethylene)

Booster set data

Number of pumps: 2

Fixed speed / variable speed: Fissa





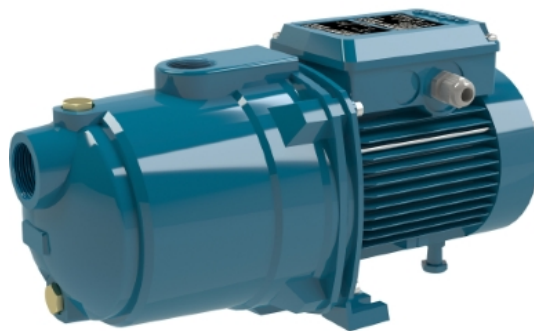
GRUPPO TIPO PLANT TYPE BS2F 2 MGP 205				Materiale . . .	
DIMENSIONI D'INGOMBRO DIMENSIONS				Trattamenti . . .	
				Spessore . . .	
				Densità . . .	
Primi campioni . . .		Modelli Stampati . . .		Peso grezzo Kg . . . finito Kg . . .	
Data 11.05.2018		Dis. Savegnago AA		Numero di disegno . . .	
		App. X		Revisione . . .	
		Scala 1:5			

REV	Modificato o sostituito	Data	Dis	App.

A norma di legge e' rigorosamente vietato riprodurre o comunicare a terzi il contenuto del presente disegno.

MGP

Horizontal multi-stage close coupled pumps



CONSTRUCTION

Horizontal Multi-Stage Close Coupled Pumps

Single-piece barrel casing in cast iron, with front suction port above pumps axis and radial delivery at top. Stages in Noryl.

APPLICATION

For water supply systems.

For domestic use, for garden use and irrigation.

OPERATING CONDITIONS

Liquid temperature: 0 °C to +50 °C.

Ambient temperature up to 40° C.

Maximum permissible pressure in the pump casing: 8 bar.

Continuous duty.