

Code: Custom

Description:BS2F 2 MGPM 405

Pump data:

H max (m): 50.00

H min (m): 19.00

Q min (mc/h): 2.25

Q max (mc/h): 7.20

N. of impeller 5

Weight (kg): 15,75

Construction materials:

Pump Casing: Cast iron GJL 200 EN 1561

Casing Cover: Cr-Ni steel 1.4301 EN 10088 (AISI 304)

Stage Casing:: Noryl PPO-GF20

Impeller:: Noryl PPO-GF20

Shaft: Cr-Ni steel 1.4301 EN 10088 (AISI 304)

Mechanical Seal: Carbon-Ceramic-NBR

BOOSTER SET CONSTRUCTION MATERIAL

Baseplate: Zinc-plated Steel S235JR

Anti-Vibration Feet: Rubber NBR (nitrile butadiene rubber)

Manifolds: Cr-Ni steel 1.4301 EN 10088 (AISI 304)
Nickel-plated Brass

Gaskets: Rubber NBR (nitrile butadiene rubber)

Pressure Gauge: Brass

Fittings: Brass

Shut-off Valves: Nickel-plated Brass
PTFE (Polytetrafluoroethylene)

Non-Return Valves: Rubber NBR (nitrile butadiene rubber)

Nickel-plated Brass

PTFE (Polytetrafluoroethylene)

Motor data:

n (rpm): 2900

Pn (kW): 1.10

Pn (HP): 1.50

Motor type: IM

Motor phases: 1~

Un (V): 230

fn (Hz): 50

Motor poles: 2

In (A): 7

Insulation class: F

Service: S1

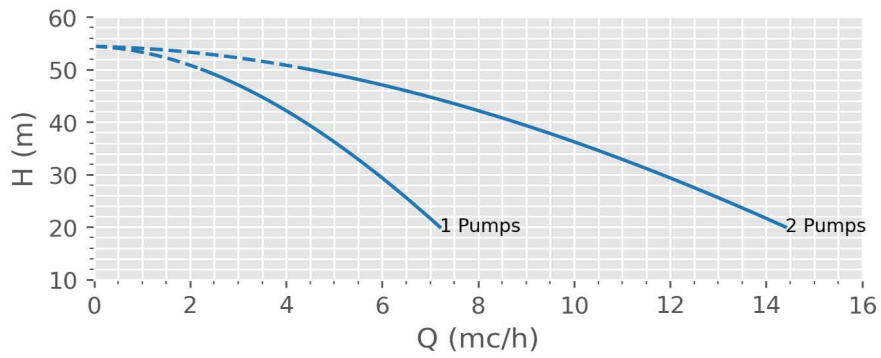
Efficiency Index (EI): IE2-79.6

Ingress protection: IP 54

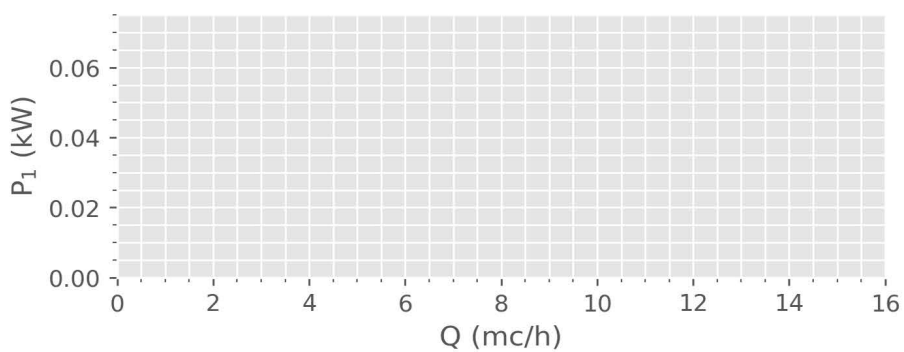
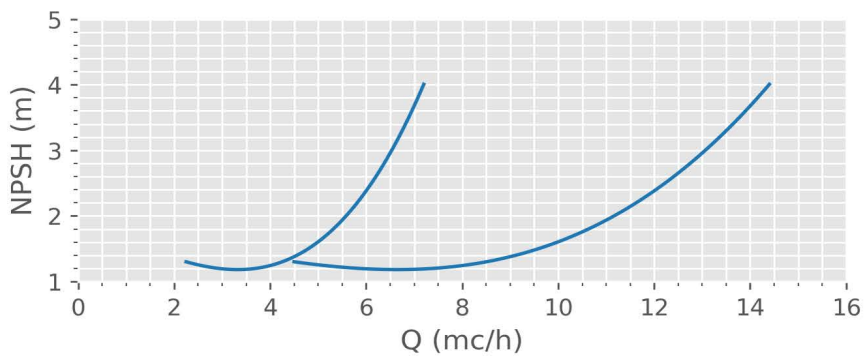
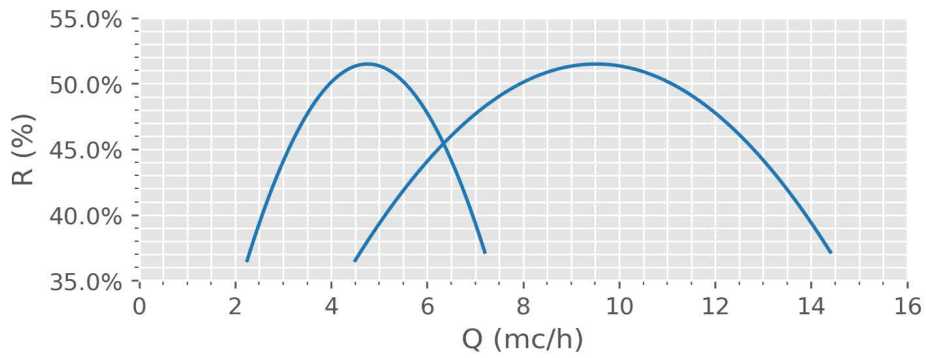
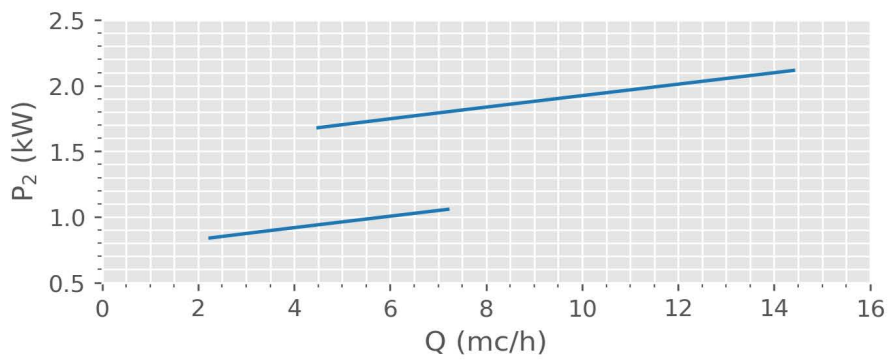
Booster set data

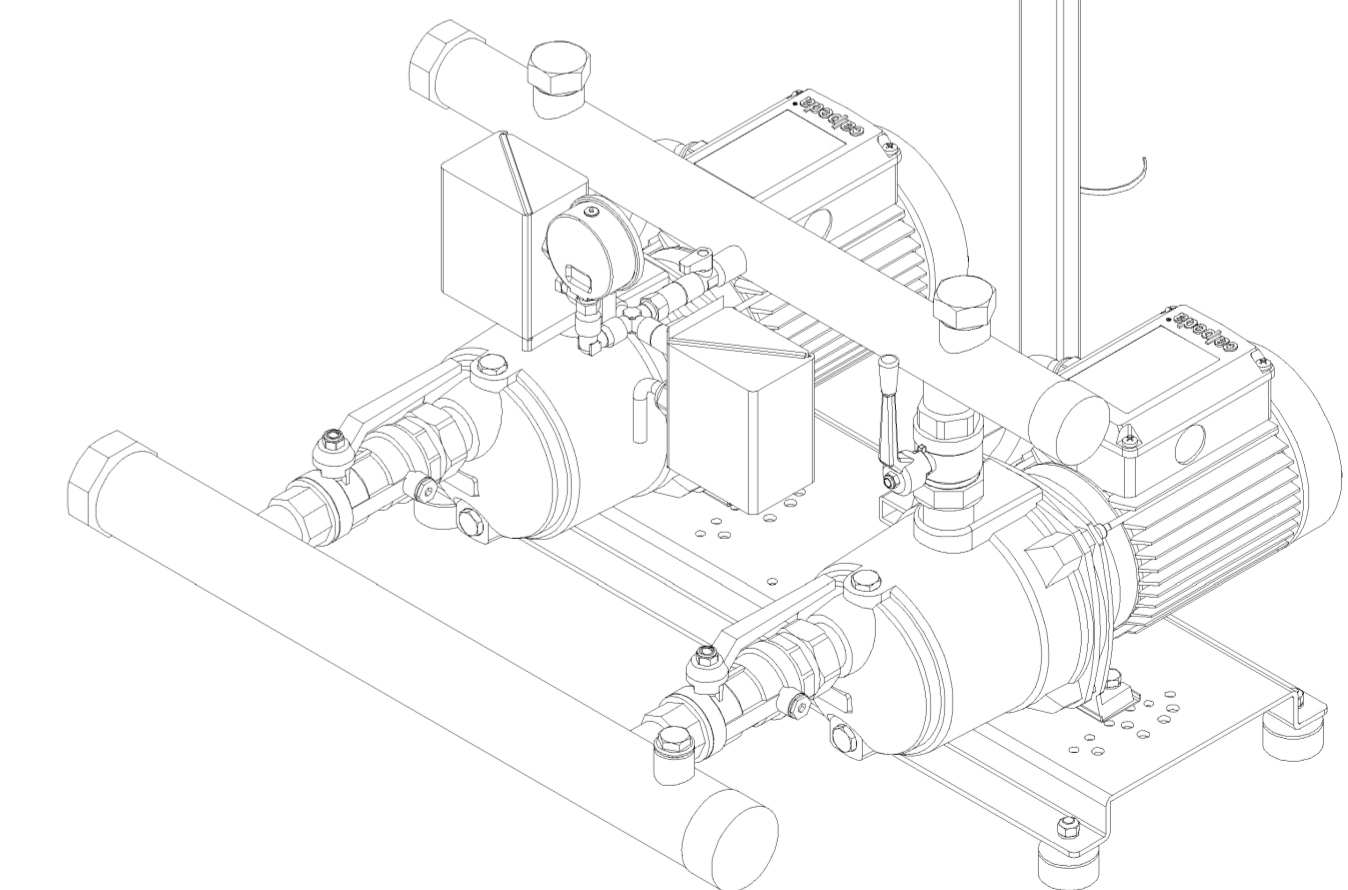
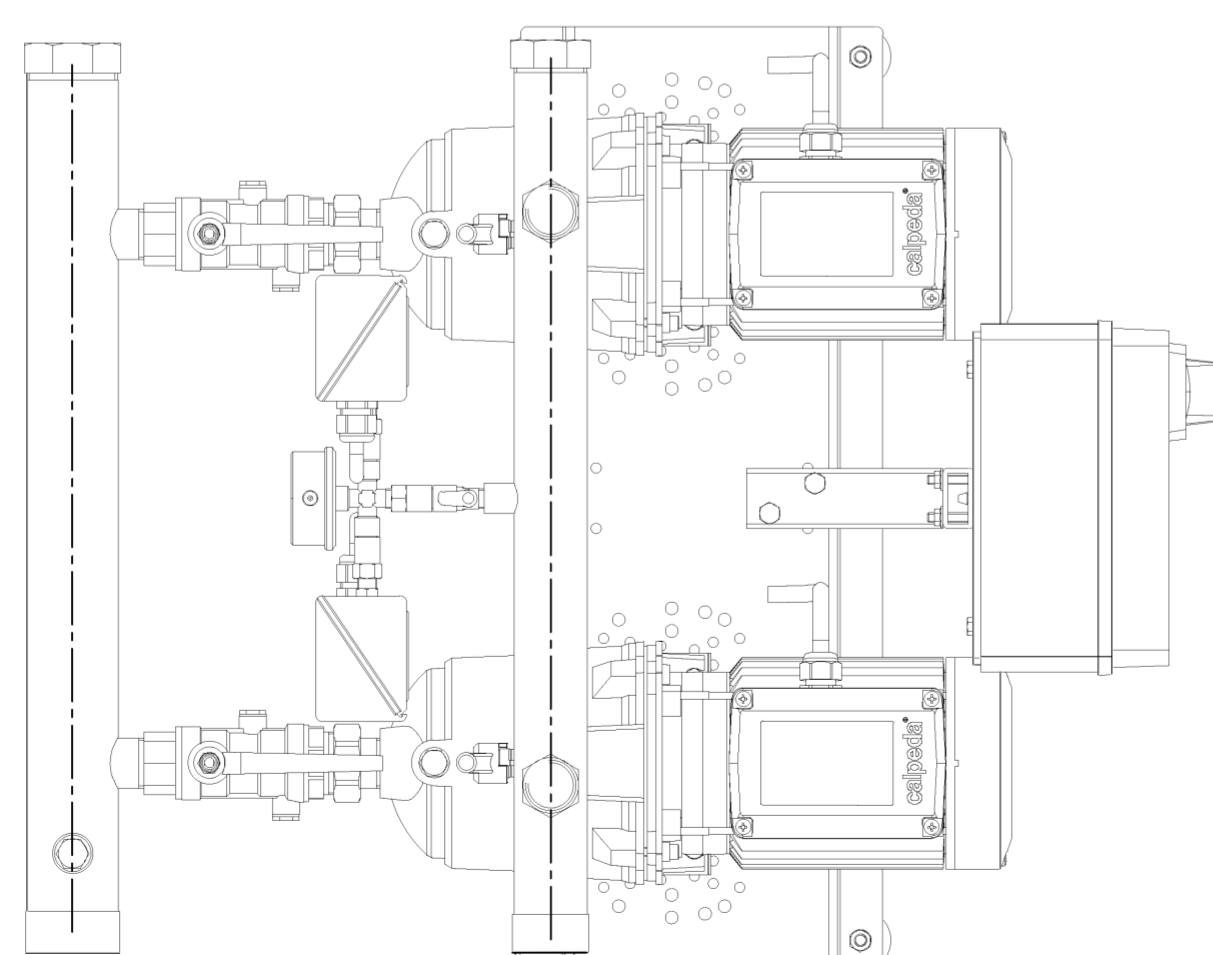
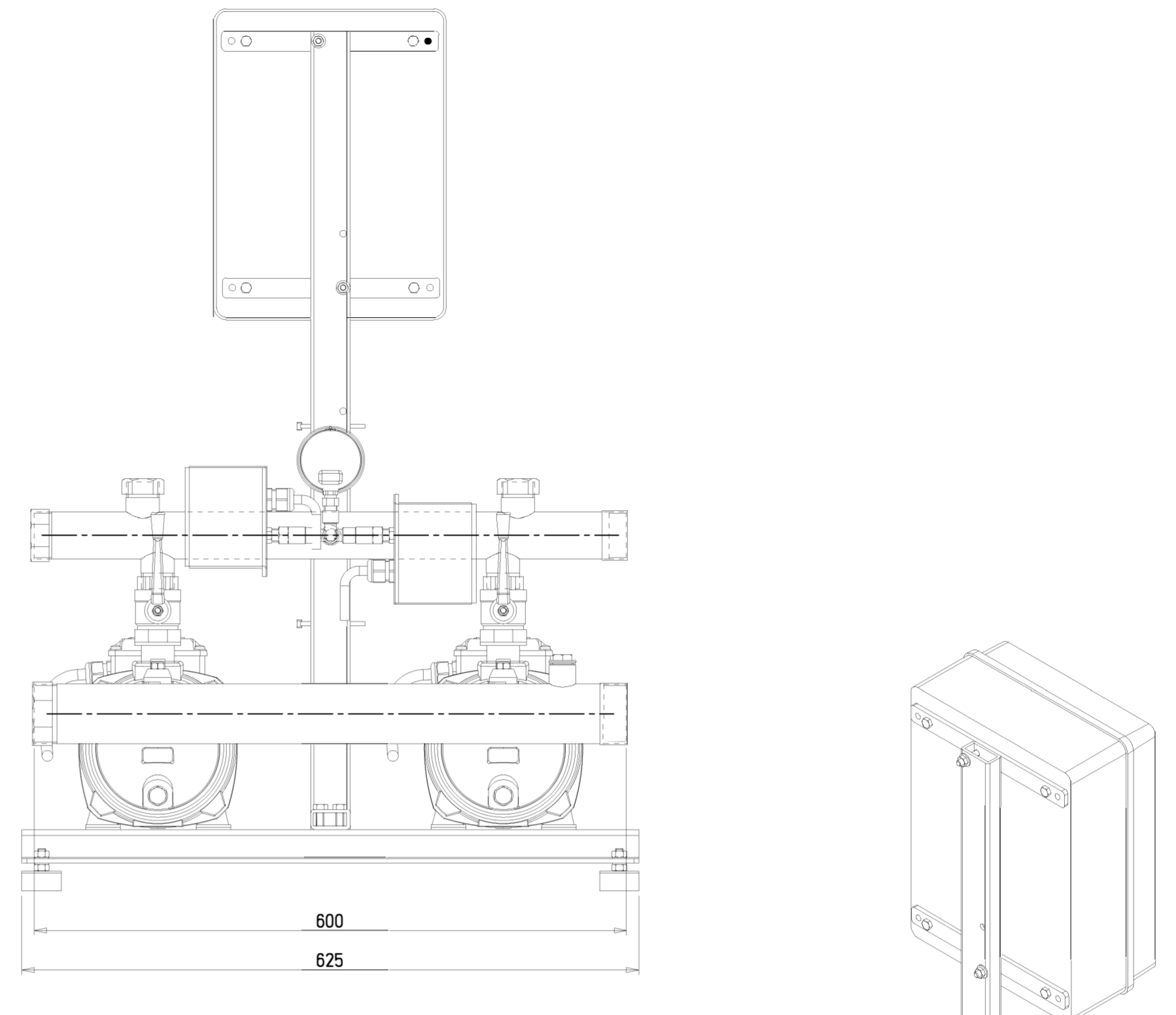
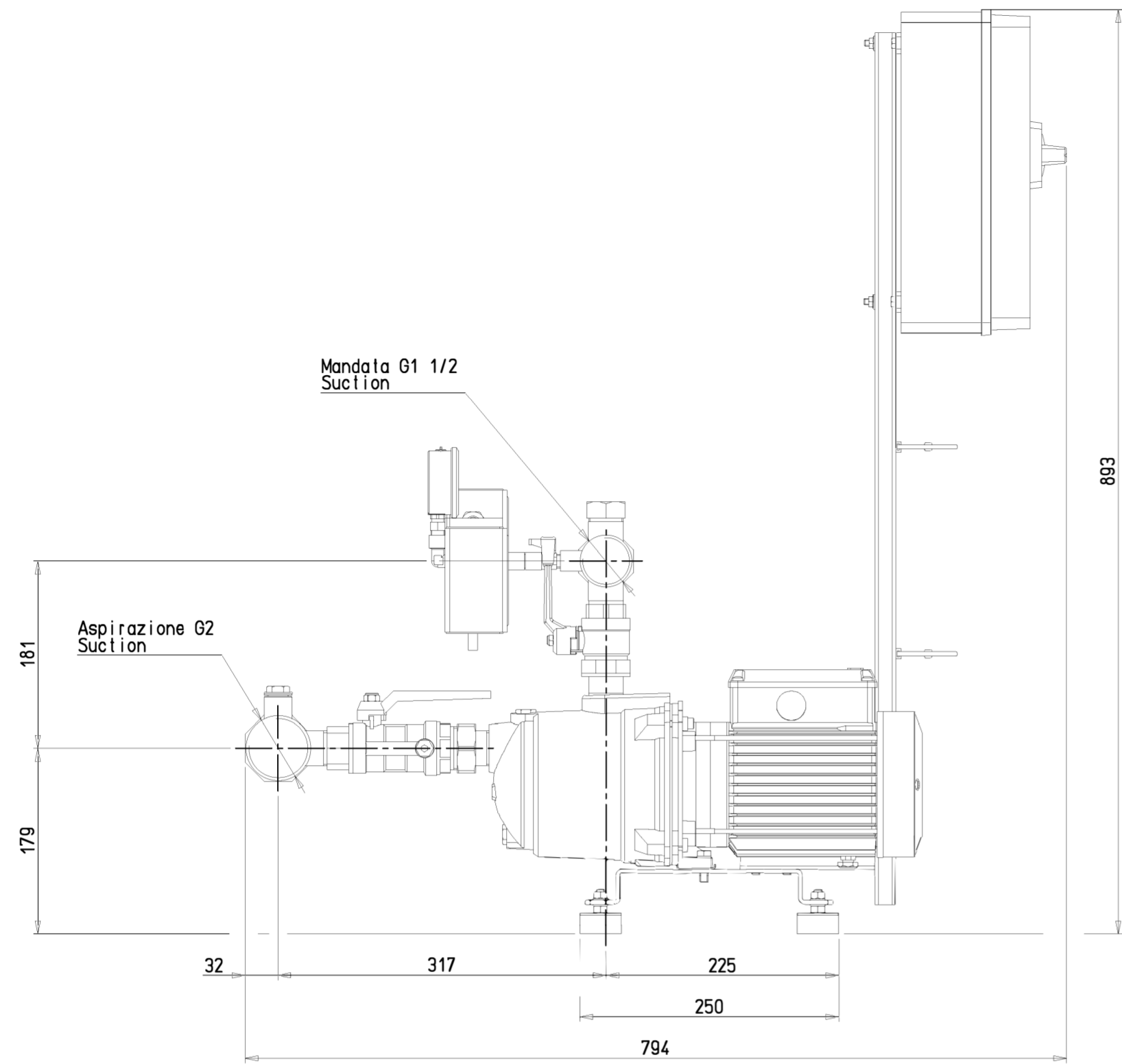
Number of pumps: 2

Fixed speed / variable speed: Fissa



— MGP|50|2|4|105|5|0





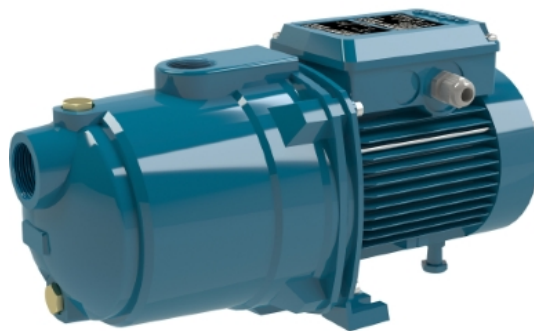
GRUPPO TIPO PLANT TYPE BS2F 2 MGP 405				Materiale . . .	
DIMENSIONI D'INGOMBRO DIMENSIONS				Trattamenti . . .	
Codice 82002410000		Modello Stampo . . .		Spessore . . .	
Primi campioni . . .		Finitura . . .		Densità . . .	
Data 11.05.2018		Dis. Savegnago AA		App. X	
Scalo 1:5		Numero di disegno		Revisione	
calpeda®				2.91.347.09 REV00	

REV	Modificato o sostituito	Data	Dis	App.

A norma di legge e' rigorosamente vietato riprodurre o comunicare a terzi il contenuto del presente disegno.

MGP

Horizontal multi-stage close coupled pumps



CONSTRUCTION

Horizontal Multi-Stage Close Coupled Pumps

Single-piece barrel casing in cast iron, with front suction port above pumps axis and radial delivery at top. Stages in Noryl.

APPLICATION

For water supply systems.

For domestic use, for garden use and irrigation.

OPERATING CONDITIONS

Liquid temperature: 0 °C to +50 °C.

Ambient temperature up to 40° C.

Maximum permissible pressure in the pump casing: 8 bar.

Continuous duty.